

PERFORMANCE

Processor

Intel® Core Ultra 9 285H, 16C (6P + 8E + 2LPE) / 16T, Max Turbo up to 5.4GHz, 24MB Intel Smart Cache

AI PC Category

AI-Ready Workstations

NPU

Integrated Intel® AI Boost, up to 13 TOPS

Graphics

NVIDIA® RTX PRO 1000 Blackwell Generation 8GB GDDR7 Laptop GPU

Chipset

Intel® SoC Platform

Memory

2x 16GB SODIMM DDR5-5600 Non-ECC

Memory Slots

Two DDR5 SODIMM / CSODIMM slots, dual-channel capable

Max Memory

Up to 96GB (2x 48GB DDR5 CSODIMM)

Storage

1TB SSD M.2 2280 PCIe® 5.0x4 Performance NVMe® Opal 2.0

Storage Slot

Two M.2 2280 PCIe® 4.0 x4 slots

Max Storage Support^[1]

Up to two M.2 2280 Gen 5 Performance SSD; up to 4TB total, 2TB each

RAID Preset

None

Card Reader

SD Express 7.0 Card Reader

Audio Chip

High Definition (HD) Audio, Realtek® ALC3287 codec

Speakers

Stereo speakers, 2W x2, Dolby Audio™

Microphone

2x, Array

Camera

5.0MP + IR with Privacy Shutter and Human Presence Detection

Battery

90Wh

Power Adapter

140W USB-C® GaN (3-pin)

DESIGN

Display

16" WUXGA (1920x1200) IPS 400nits Anti-glare, 45% NTSC, 60Hz, TÜV Low Blue Light

Touchscreen

None

Screen-to-Body Ratio

87.7%

Color Calibration

AICCP Color Calibration

Pen

Pen Not Supported

Keyboard

Backlit, Spanish (LA)

Dimensions (WxDxH)^[2]

361.5 x 248.6 x 12.8 / 19.55 (front / rear), 26.3 (maximum) mm 14.23 x 9.79 x 0.50 / 0.77 (front / rear), 1.04 (maximum) inches

Weight^[3]

Around 2.1 kg (4.6 lbs)

Case Color

Black

Case Material

Aluminium (Top), PC-ABS (Bottom)

SOFTWARE

Operating System

Windows® 11 Pro, Spanish / Mexican Spanish / English

Bundled Software

Intel® Connectivity Performance Suite

CONNECTIVITY

WLAN + Bluetooth

Intel® Wi-Fi® 7 BE201, 802.11be 2x2 + BT5.4, vPro®

WWAN

Non-WWAN

SIM Card

None

Ethernet

100/1000M (RJ-45), vPro®

Standard Ports

- 1x USB-A (USB 5Gbps / USB 3.2 Gen 1)
- 1x USB-A (USB 5Gbps / USB 3.2 Gen 1), Always On
- 2x Thunderbolt™ 4, with USB PD 3.1, 140W input / 15W output
- 1x HDMI® 2.1, up to 8K/60Hz
- 1x Headphone / microphone combo jack (3.5mm)
- 1x Ethernet (GbE RJ-45)
- 1x SD Express 7.0 card reader
- 1x Security keyhole

Docking

Various docking solutions supported via Thunderbolt™ or USB-C®. For more compatible docking solutions, please visit [Docking for ThinkPad P16v Gen 3 \(Intel\)](#)

SECURITY & PRIVACY

Security Chip

Discrete TPM 2.0 Enabled

Physical Locks

Kensington® Nano Security Slot, 2.5 x 6 mm

Fingerprint Reader

Touch Style, Match-on-Chip, Integrated in Power Button

Other Security

- Bottom cover tamper detection
- Camera privacy shutter
- Ultrasonic Human Presence Detection for IR camera
- IR camera for Windows® Hello (facial recognition)

MANAGEABILITY

System Management

Intel® vPro® Enterprise

SERVICE

Base Warranty

3-year, Onsite with 1-year Battery

ACCESSORIES

CERTIFICATIONS

ISV Certifications

Please visit [ISV certifications for Lenovo® Workstations](#)

Green Certifications

- ENERGY STAR® 9.0
- EPEAT™ Gold Registered
- RoHS compliant
- TCO Certified, generation 10

Mil-Spec Test

MIL-STD-810H military test passed

Other Certifications

TÜV Rheinland® Low Blue Light

MODEL

TopSeller : No EAN / UPC / JAN: 199273539550

Announce Date: 2025-08-26 End of Support : 2032-03-28

- Please refer to the official [Lenovo store website](#) or contact a local Lenovo sales representative or authorized business partner for current inventory and purchase options.
- Lenovo reserves the right to change specifications without notice. To see more note information, please access the [web page](#).

Premier Support - A direct 24x7x365 line to our most elite technicians.



Advanced technical support, 24x7x365, in more than 100 markets



Technical Account Managers for proactive relationship and escalation management



Comprehensive hardware & OEM software support



Priority on service delivery and repair parts



Single point of contact for simplified end-to-end case management



Lenovo Service Connect Portal for customized reporting and product support

Accidental Damage Protection - Protection of your PC from the unexpected.

Experience shows that a significant portion of devices may be damaged (and not covered under warranty) in the first three years. Lenovo's Accidental Damage Protection service covers accidents beyond the system warranty such as drops, spills, bumps and even electrical surges. Make sure your new device has maximum protection, avoid unplanned costs and get peace of mind.

Base Warranty - Included with the systems you purchase, default 1- or 3-year coverage window.

Warranty Extensions & Upgrades - Service and protection that's right for your circumstances.

- Pick Up & Return Courier
- Onsite Support
- Technician Installed Customer
- Replaceable Unit Service
- International Warranty Upgrade

Lenovo may not offer the products, services or features discussed in this document in all regions. Lenovo may withdraw an offering at any time. Information is subject to change without notice. Consult your local representative for information on offerings available in your area. Lenovo reserves the right to change specifications or other product information without notice. Lenovo is not responsible for photographic or typographical errors. Lenovo provides this publication "as is" without warranty of any kind, either express or implied, including the implied warranties of merchantability or fitness for a particular purpose.

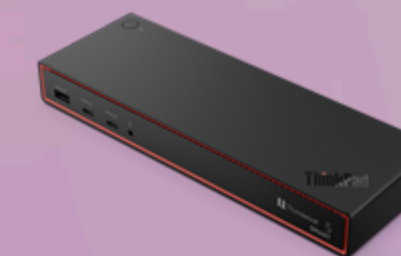
Recommended Accessories



Lenovo Legion 17" Gaming Backpack GB800 (Light Gray) GX41U39300



ThinkPad Mobile Workstation 140W USB-C GaN Slim AC Adapter-TW 4X21U28828



ThinkPad Thunderbolt 5 Smart Dock 7500 - US 40BA0265US

Please click [here](#) to view the full list of accessories.

Lenovo

PSREF
Product Specifications
Reference